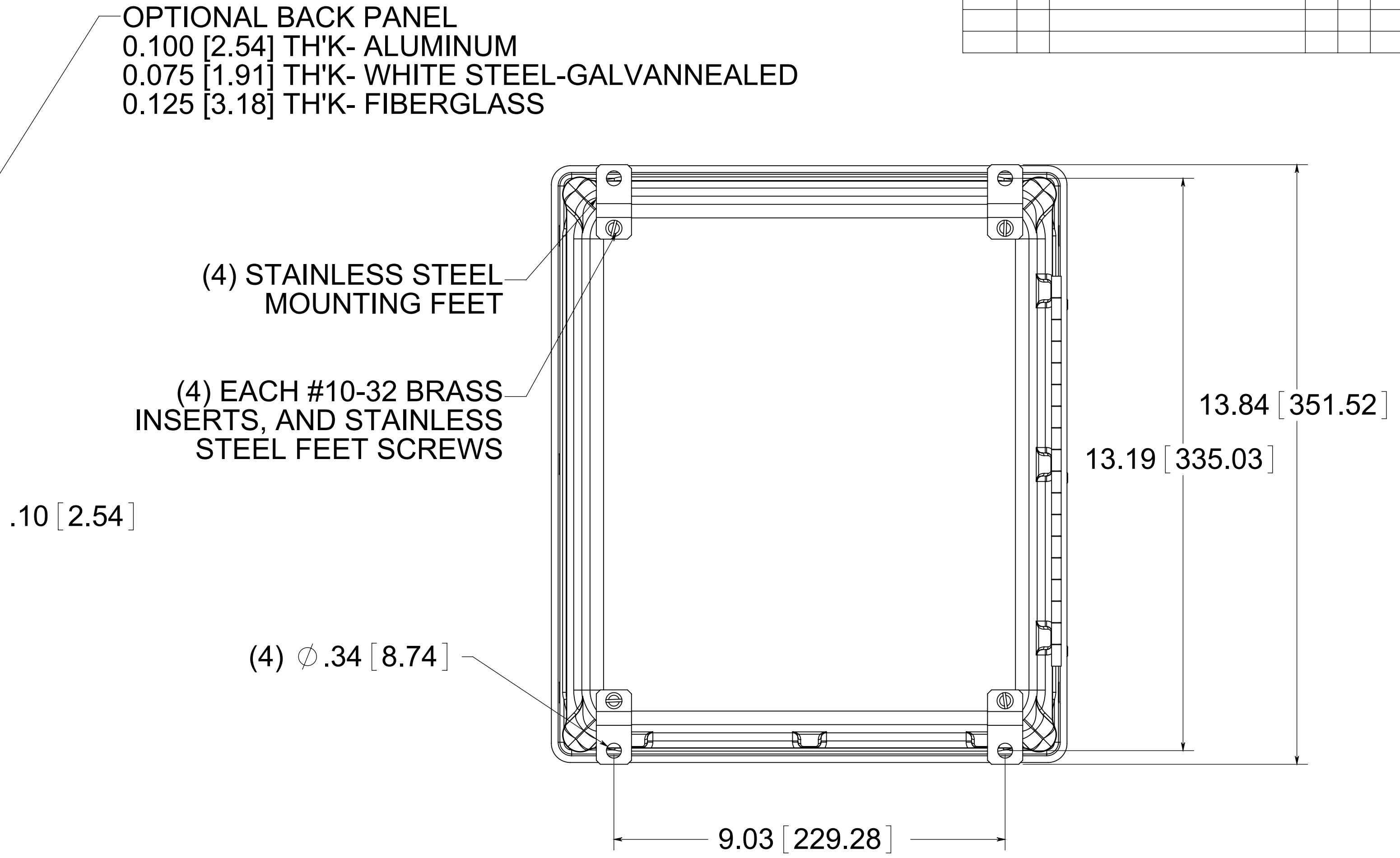
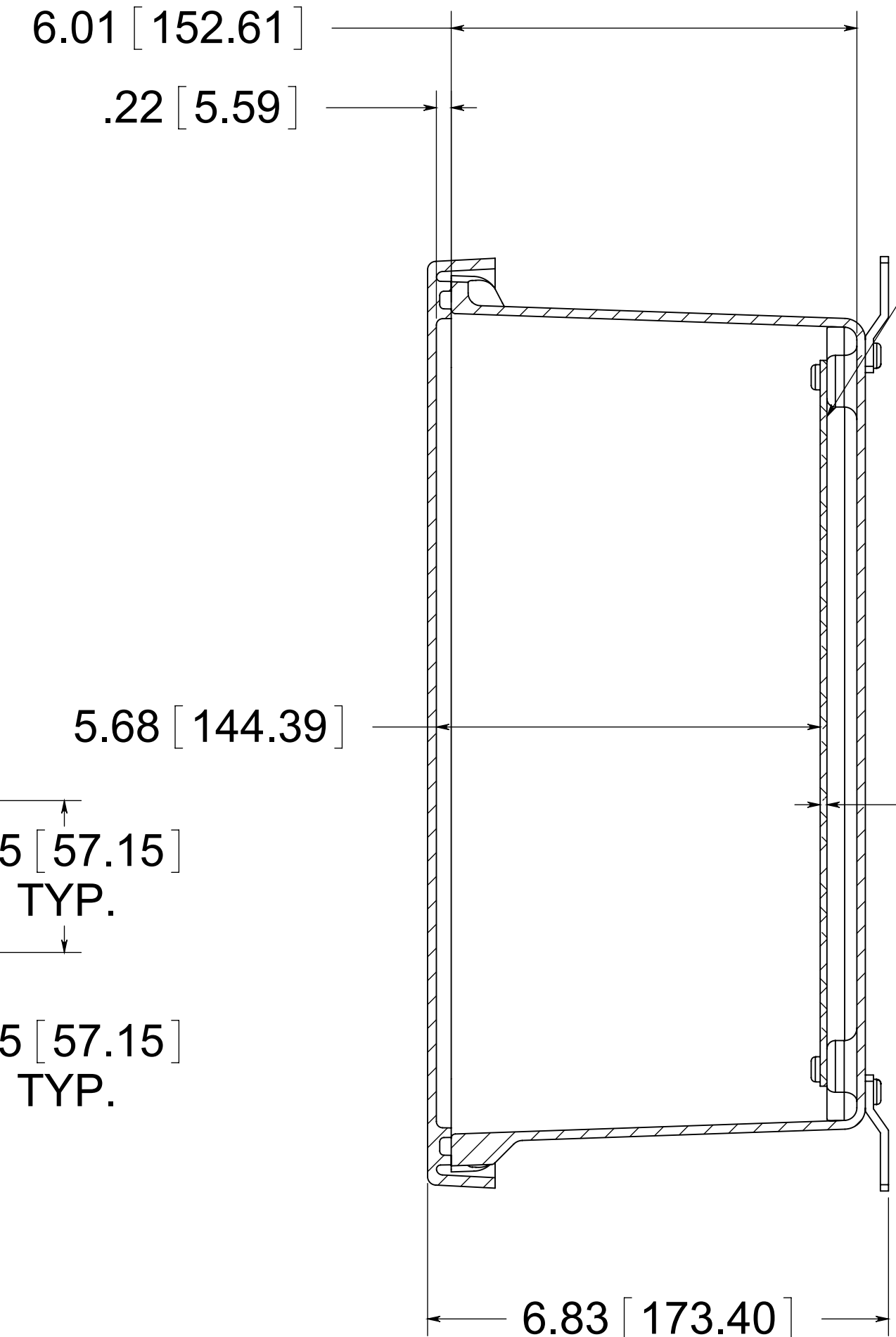
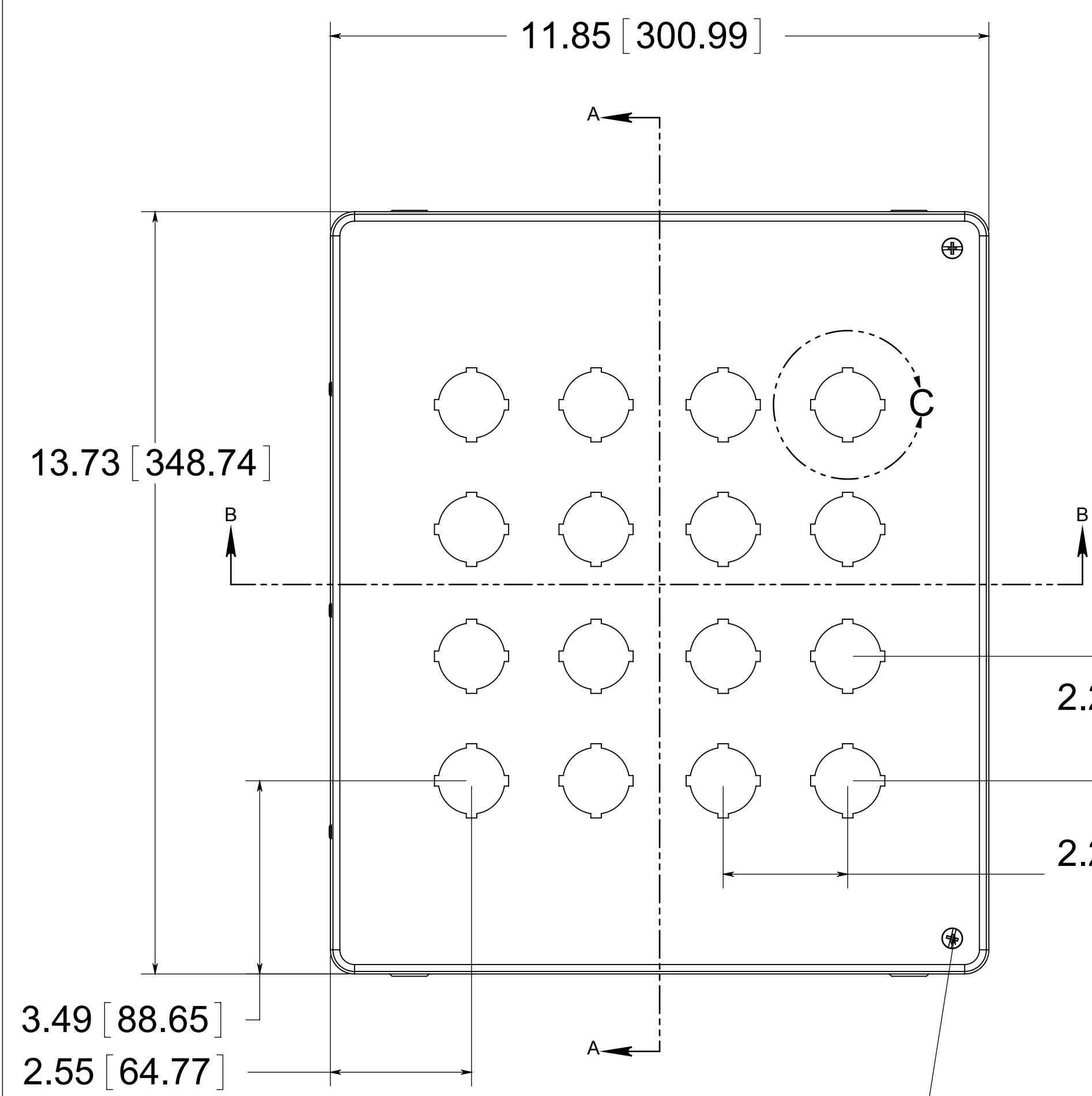
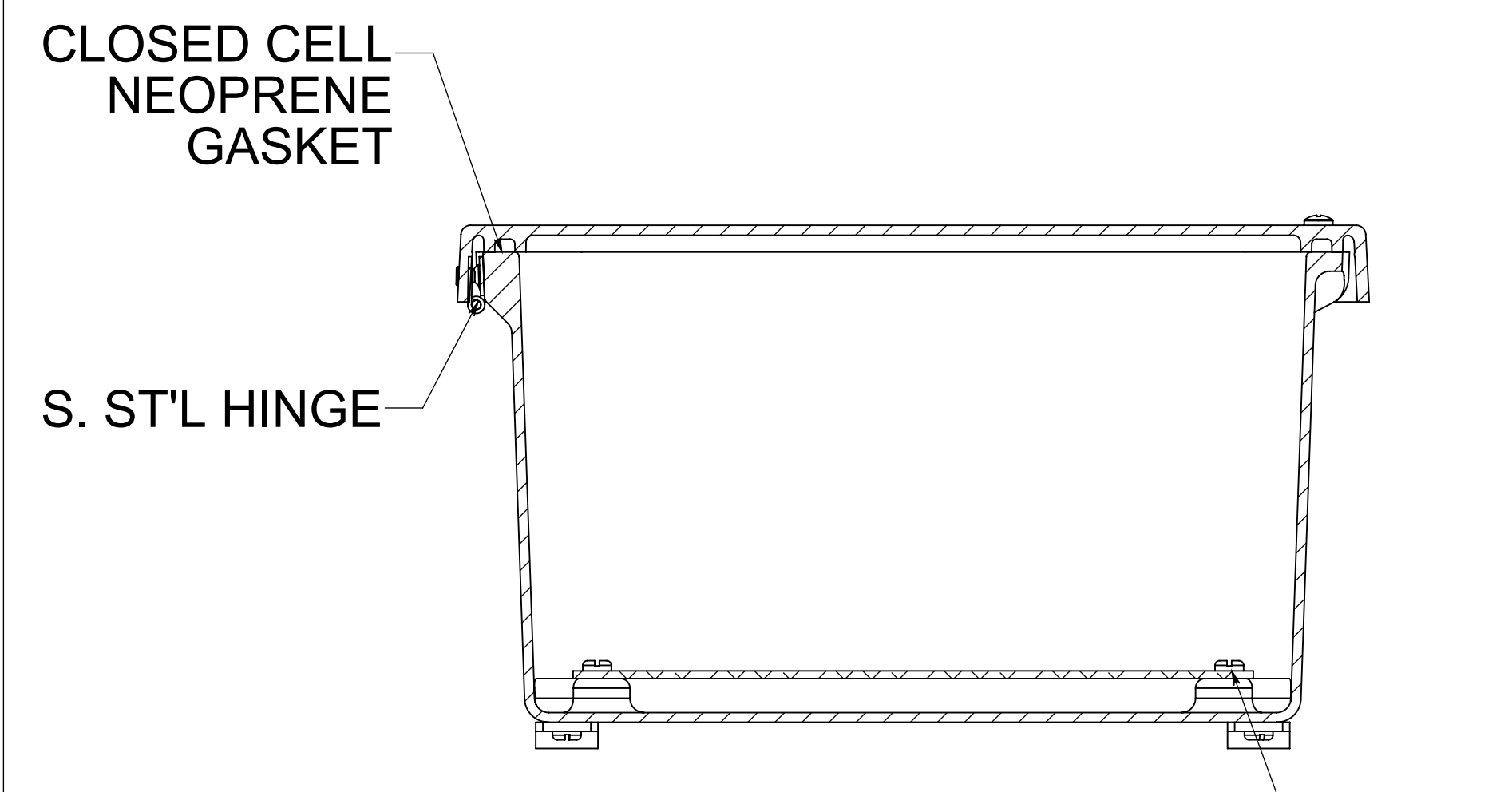


DATE	SYM.	DESCRIPTION	DR	CK	REL

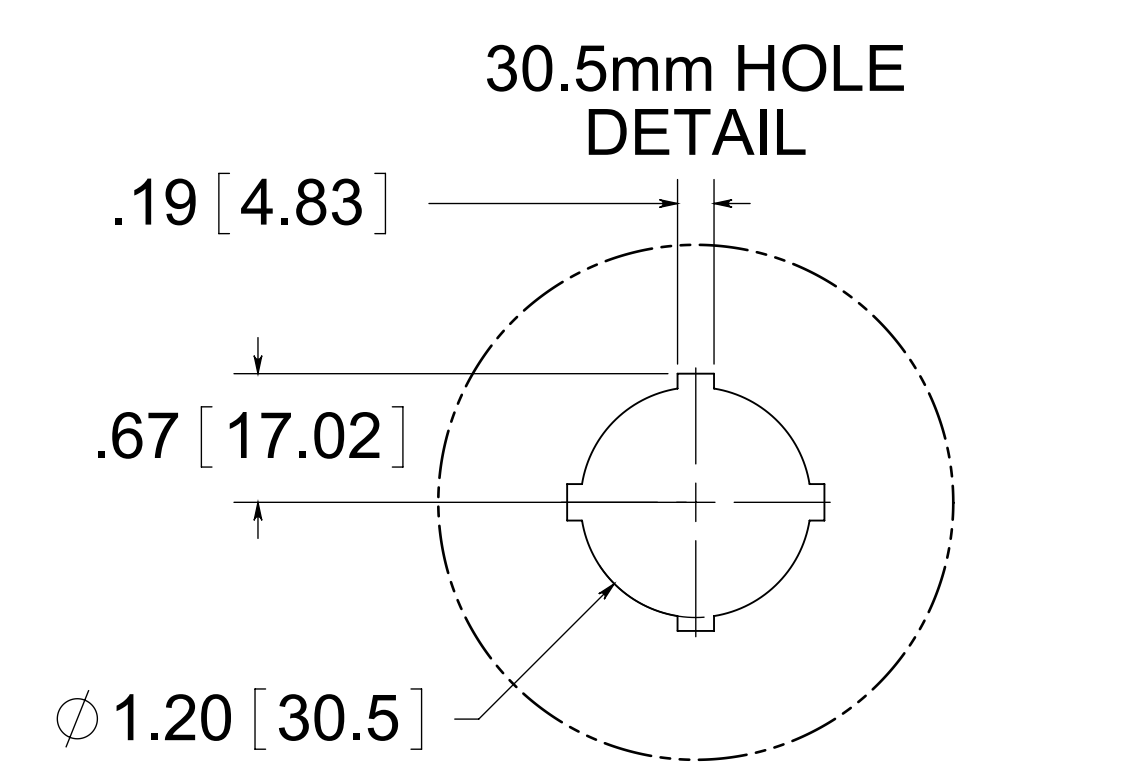
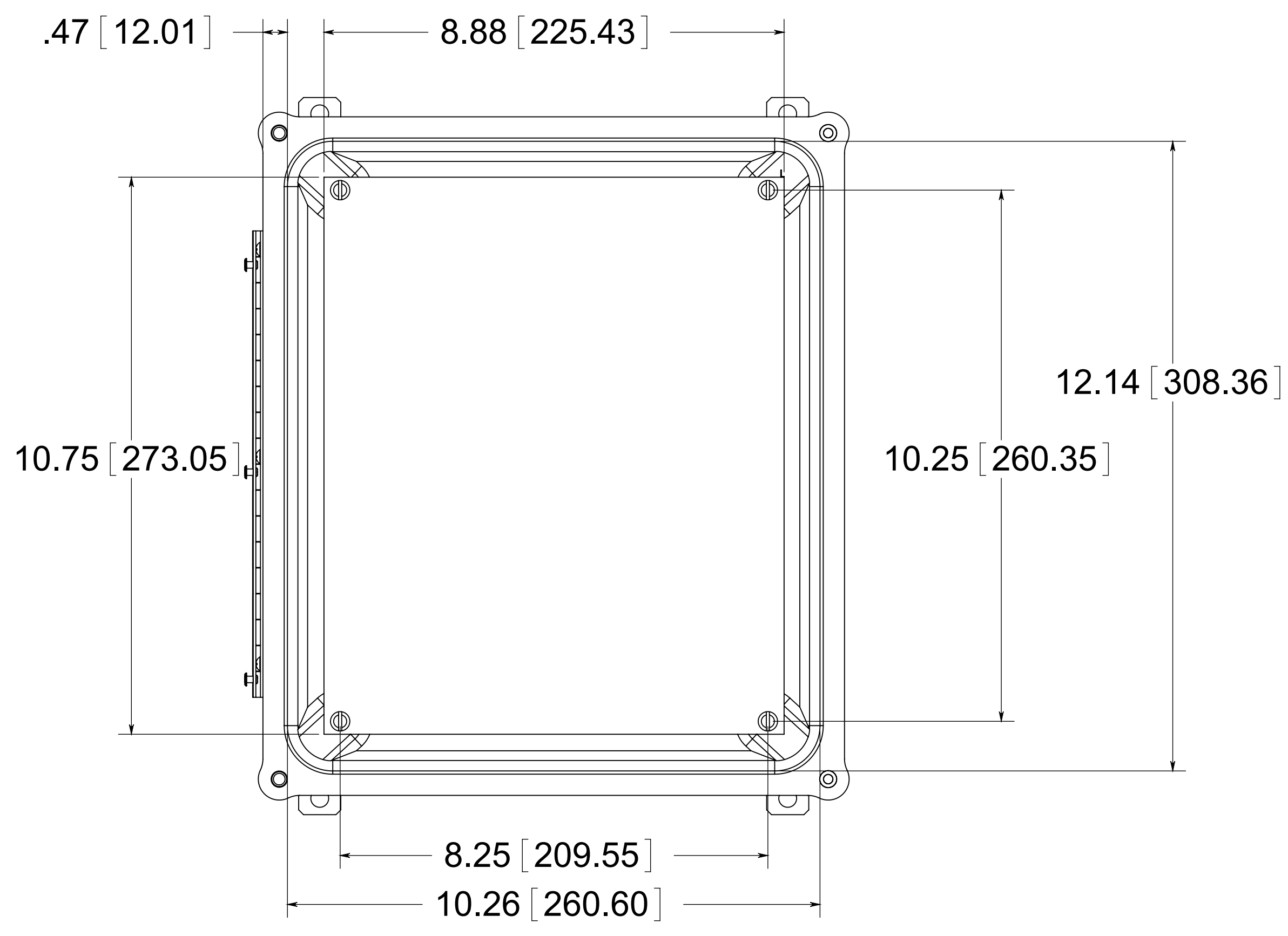


(2) EACH #10-32 BRASS INSERTS AND STAINLESS STEEL CAPTIVE COVER SCREWS WITH RETAINING O-RING



2.25 [57.15] TYP.
2.25 [57.15] TYP.

FRONT VIEW WITH COVER REMOVED AND BACK PANEL SHOWN
BACK VIEW



(4) EACH #10-32 BRASS INSERTS AND PLATED CARBON SCREWS

MATERIAL
 BOX- COMPRESSION MOLDED FIBERGLASS REINFORCED POLYESTER
 COVER- COMPRESSION MOLDED FIBERGLASS REINFORCED POLYESTER
 WINDOWS- POLYCARBONATE

CONFIDENTIAL
 THIS MATERIAL IS OWNED BY THE ALLIED MOULDED PRODUCTS COMPANY, IS DISCLOSED IN CONFIDENCE, AND IS NOT TO BE REPRODUCED OR DISTRIBUTED WITHOUT PRIOR WRITTEN PERMISSION FROM ALLIED MOULDED PRODUCTS.

AM ALLIED MOULDED PRODUCTS
 BRYAN, OHIO
 The Original Fiber Glass Outlet Box
 Product Series
AM-JIC
 Part No.
AM1206HP16